



O

1995 3 6

3 6 “

”

10 10

“ ”

3

1000

3

9

6

12

1 55

2 60

3

4

4

1

2

3

5

4

2012

2013

1

2

3

6

4

5

7

6

7

2012 1 1

8

1

2011

2

94

3

2000

30

2500

50

3000

80



5000  
10000  
3000  
1000  
300  
150  
4  
1  
2  
2  
3  
2  
4

5

5

37

1

2

6

2011

7

1

2

3

4

5

12

1

2

3

1000

990

10

1

2

3

4

1

14

2

3

68

“

”

4

5

2012

15

2013

“ ”

“ ”

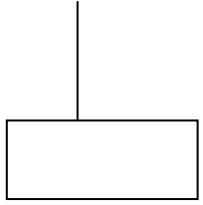
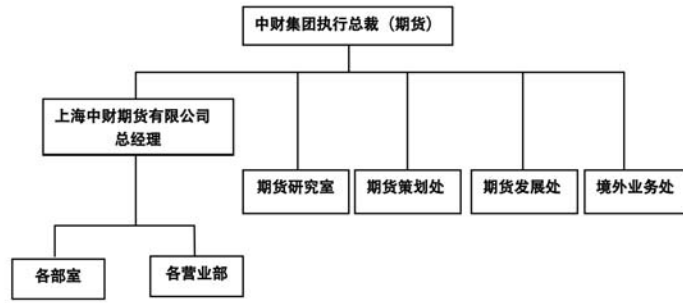
1

“ ”

“ ”

2

16



3

1

CTA

2



3

4

4

30

1 2012

2 2013

8

3

2013

2015

5

“ ” “ ”

6

1

2010

30

47.9

14.4

10.7

3.5

10.7

2.5

4.4

2

3

20

4

1

2

10

7‰×12 8.4

3.3

10

10 × 8.4

3.3

×1 2 2550

PVC

8000

10 8000

12.5

100

1250

8.4

204

PVC

204

3

10

2

PVC

4

PVC

1

22

2

3

23

U

4

1

2

2011 7 1

1

24

2

18

3

1

16

30663.4

25



2

3

94

2011

37

26

O

1 1350

2 1350

3

50

4

“ ”

5

1800

——

200

“ ”

6

30 40

7 2012 1 1 2016 12 31

200

800

1350

8

28

9

10

2013 5000 2014 10000

2015 30000 2016 50000

1.17

2012 3000

1

2

3

4

5

30

1

2

3

4

23

31

5

2012 \*

1

2

147

3

—

4

32

26

23

5

—

6

1

2



“

”

3

“

”

4

5

23

34

1

2

3

2000

2000

1

2

1

2

2015 12 31

3

2012 1 1

36

1

2

3

4

8000

1

2

3

4

5

6

7

1

2

38

3

4

**2012**

O

1

1

2

3

4

5

6

7

8

9

10

40

2

1

2

3

4

5

6

7

8

9

10

11

12

13

14

15

16

17

18



19  
20

1  
2  
3

1                    1                    2

2  
3  
4  
5

2012

1

2

4000

2012

3

“ ”

“ ”

4

A



O

1  
”

“

2

2700

3000

300

3

4



6

7

46

8

1

”

“

2

200

3

47

500

1

2

3

25

48

4

—

5

1

1

160

178

2

“

”

“

”

“

”

“

”

“

”

2

1

80%

20%



2

3

4

2

3

4

10%

5

3

1

60%

2

3

1

2

“ ”

3

4

6 30

1

2

3

27

4

100

5

52

1

2

174

3

4

1

2

3

4

1

2

3

4

25

5

54

1 2010 8

—

2

“ ”

3

4

1

2

56

3

4

2012

33

5

100

57



1

2003

2

2003

3

4

20000

58

5

6

56

7

8

59

1

2

60

O

1  
”

“

2

2000  
200

1800

3

4

5

10

2015

5000

2016

2014

2013

3000

10000

2017

20000

1.17

6

56

62

1

1

D

2

D

3

D

2

1000

10800

3

1 2

4

5 2015

64

1

2

11

3

22

4

65



1 “ ”

2

3

4

5

6

1

2011 2012

3000

2

2003 2004

3

2009

4

100

100

5

2015

2015

30

6

1

2

161

—

3

69

4

“ ”

“ ”

5  
2013

2015

1

70

2

3 2013

180

1

2

3

4

1

2

72

3

1

2

200

15

12

3

73



4

—

1 2013

2015

2013

2013

2

3 2013

200

74

1

2

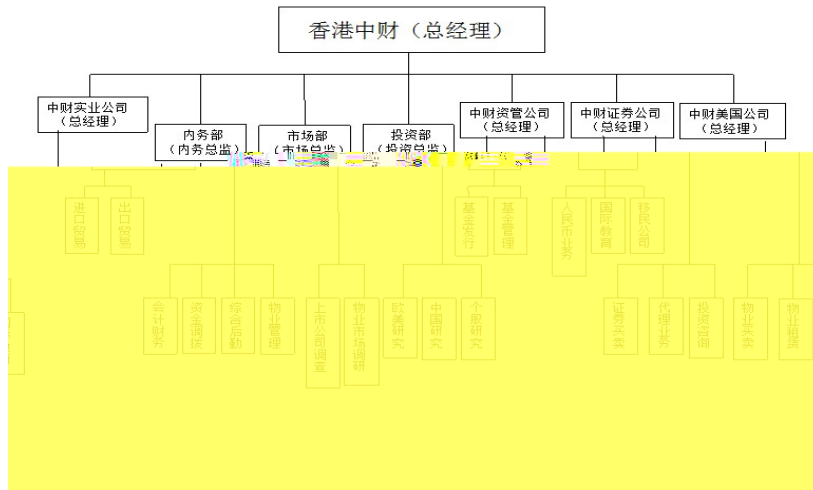
3

4

5

6

76



1

200      350  
300      450

400      600

2

3

4

78

2 100  
30  
20 10  
5  
3 1  
4  
2013

**2013**

O

1

1

2

3

4

5

6

7

8

9

10

80

11

12

2

1

2

3

4

5

6

7

8

9

10

11

12

13

14

15

16



17  
18  
19  
20

1  
2  
3

1  
1  
2  
3  
4  
2

A  
A

3

4

5

1

1

2

2

1

2

3

1

2

4

5

6

2013

2

7

A

84

O

1  
”

“

“

”

2

85

“ ”

2000

3

200

1800

4

200

1800

5

200

1800

6

1800

200

7

8

1.17

10

2013

2014

87

3000 2015 5000 2016  
10000 2017 20000  
56

1

“ ”

2

3

1

“ ”

2

3

“

”

4 “ ”

4

5

6

“

”

7



8

9

10

11

“

”

1

90

2

3

4

5

6

7

8

“

”

1

“ ”

92

2

3

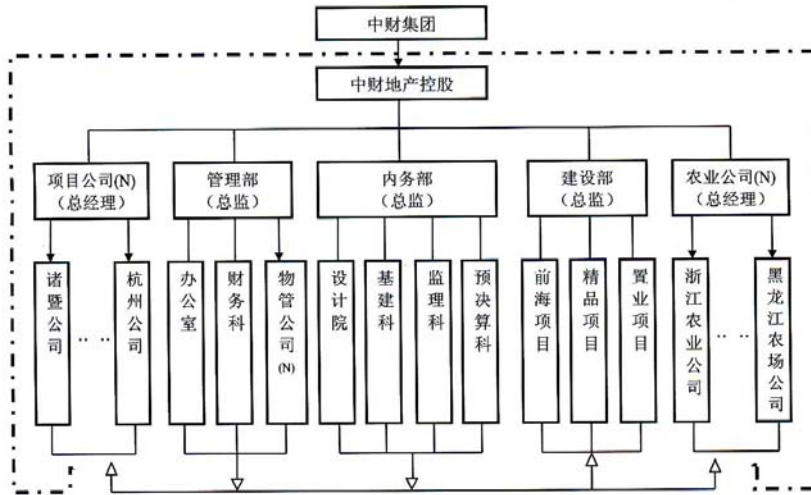
4

3000

4000

5

1



2

1

2

1

3

95 5

4

90

10

5

6

3

95

7

1

2

8

“

”

“

”

1

2

3

3

3

4

1



2012		D			
		6	D	3	D
2	D	10	D	2	D
1	D				
2					
1					

2

3

99

1

2

3

1

2

2

100

1.3

2

2000

4

5

1

2

1

3

2

6

101

3  
3  
1

2016

2                      1                      2

3                      4

4

O

1

2

3

4

104

5

1

A

B

C

D

E

2

A

B

C

D

E

F

3

A

B

C

D

6



1

“

”

“

”

2

3

“

”

4

“

”

5

“

”

6

“

”

7 “ ”

1

2

10000  
600

3

4

30

“ ”

5

6

108

1

1

2

3

4

2

3

109

147

4

3

5

6

7

110

D

8

1

2012

2012

2013

5000

7000

2

2013

8000

3

2010

4

100

100

5

50

30

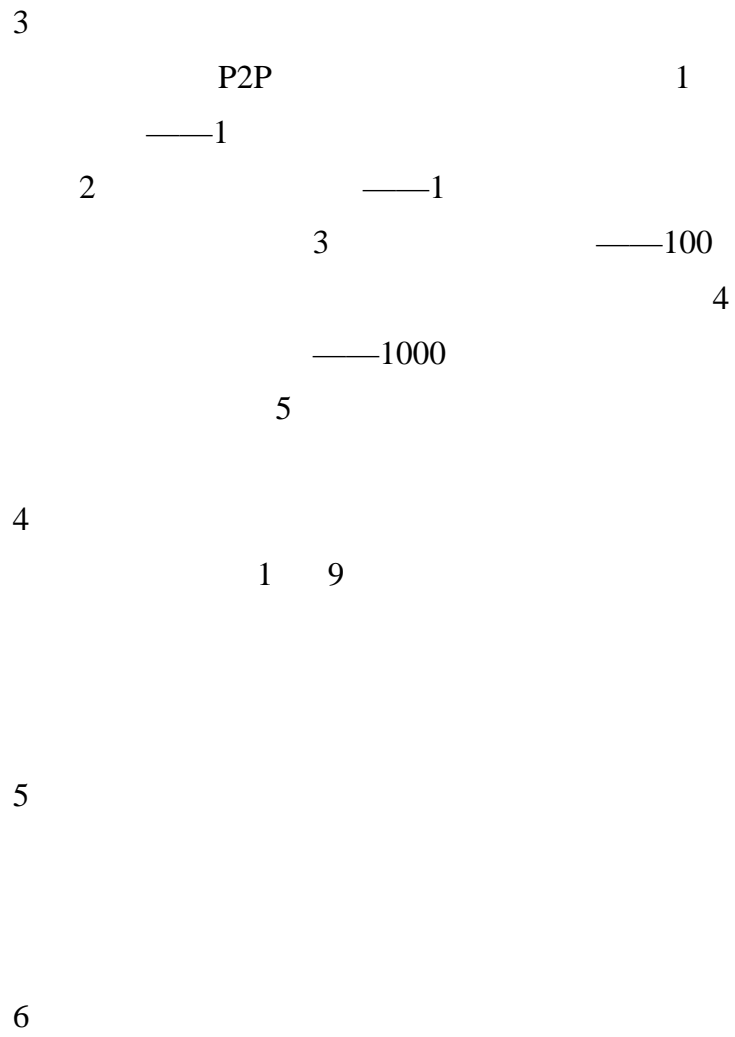
1

2

2560

2500

112





7

8

9

114

1		10800
2		10600
”		“
3		35034
4		10060
5		5060

10

500

6

100

80

116

1

2

3

4

1

5800

5000

2

300

3

4

5

6

PVC

118

“

”

PVC

7

“

”

8

9

10

“

”

1

2

1

2

3

3

4

—

1

50

2

50

3

2013

121



2013

100

4

2014

200

5

2014

180

1

2

20

122

3

4

5

6

7

1

S600

—

2

3 2011

1

124

2014 1 1

2

4

5

3 4

**2014**

O

1

1

2

3

4

5

6

7

8

9

10

11  
12  
13  
14  
2

1  
2  
3  
4  
5  
6  
7  
8  
9  
10  
11  
12  
13  
14

15  
16  
17  
18  
19  
20

1  
  1  
  2  
2  
  1  
  2  
  3  
  4  
  5

1

1

2

3

2

1

2

3

4

1

2014



2

2014

3

4

5

10

11

12

13

O

1

2

132

3

20

4

5

1

2

133

3

6

7

134

1

2

2014

3

“ ”

5

4

2014

300

5

6

136

250

7

2010

2012

137



1

13

2

IT

3

P2P

“ ”

4

138

IT

5

6

1

P2P

10%

50%

P2P

$$A^2 +$$

A B C

10

2%

1%

B

—

—

—

C

a

2%

b

c

3

A

B

C

4

A

a

IT

P2P

b

144

“ ”

B

IT



5

P2P

1

2

1

2

3

4

146

3

1

2

3

4

4

1

“

” “ ”

2

3

4

20

147

5

1

2

2

“ ”

3

4

1

2

3

1

2

3

4

5

6

7

4

1

7

1  
2013 12 31 2018 12 31

2

3

2014 6 30 2017 6 30

4

90

10

152

O

1  
M2

“ ”  
GDP

2

3



4

1000

90

10

5

1000

+1000

6

2000

100

154

7

8  
20

1

2  
12 31

2014

90

10

10

155

3  
2014 12 31  
400 400  
10 90 10  
4  
1000 500 400  
5 500  
156 1000

80

6

7

20

1

2

157

3

1

2

3

4

5

4

5

6

1

2000

/

2

3000

/

3

4000

/

4

6000

/

5

15000

/

7

1

2

3

10080

4000

6080

160

4

5

6



“ ”

1 “ ”

2

3 “ ”

1000

2019 12 31  
162

20000

2000

4

“ ”

5

“ ”

6 “

”

1

10000  
2  
“ ”  
6000 2016  
2015  
250 / 300 /  
450 /  
3  
1 2014  
150  
2 2015  
200 3 2015  
4

4

1

6 2

3

5

1

2

2014

3

165

6

7

166

**2015**

O

1

1

2

3

4

5

6

7

8

9

10

11  
12  
13  
14  
2

1  
2  
3  
4  
5  
6  
7  
8  
9  
10  
11  
12  
13  
14

15  
16  
17  
18  
19  
20  
21  
22  
23  
24  
25  
26  
27  
28  
29  
30

1  
1  
2



2

1

2

3

4

5

6

7

1

1

2015

2

3

4

2

170

1  
2  
3  
4

1  
2015

2  
2015

2015

3

4

5

6

7

1

2

8

1

2

9

1

2

10

1

2

11

1

2

12	1	2
13	1	2
14	1	
2		
15		
16		
17		
18		
19		
20		
21		

22

23

24

174

O

1

1979

“ ”

2

1979

175

3

4

10080

6080

4000

5

1

2000

1000

2

176

3

PE

IPO

6

—

7



8

2000

1000

1

2

10080

8080

178

2000

3

1

2

3

“

”

4

5  
20

4

5

6

1

2 2015 7 1

180

3

2015

4

5

6

1

2

3

”

“

2011

4

182

—

5

1

1000

90

183

10  
2  
1000 1000  
3 117  
1  
2000  
100  
2  
3  
20

4

2000

5000

10000

500

1000

3000

6000

1 2015

5080

2

“ ”

“ ”

“ ”



“ ”

“ ”

“ ”

“ ”

“ ”

“ ”

3

4

“

”

5

1

61

4

2

3

4

4

50

3

50

10

187

4

4

1

1

2 “

” “

”

200

188

2

1

2

3

5060

2560

2500

189



O

1

2

3

4

“ ”  
“ ”  
“ ” “ ” “ ”  
” “ ” “ ” “ ”  
”

5

6

7

8

9



10

1	13000	2015	12
31	3000		
		2000	
1000			
194			

2

30000

20000

10000

3

2015 12 18

30

20

10

100

70

50

30

4

2016 3 31

195

1

2010 6 2015 12

2

3 A (略) ; B (略) ; C (略) ;  
D (略) ;

4

2016

ABCD

5

2016 4 1

6

7

1

40

2

1.9

2012

2013

2014

95

2015

16.8543

/

0.8348

3

197

15 2015 12 31

15

4

2015 12 31 2021

12 31

33.7

5

16.8

198

6      2015   12   31      2021   12   31

7

1

8

30 50 30  
30 30  
9  
2016  
1  
2015 2014  
2015  
2  
2014  
2015  
200

3

4

100

100

5 2016

6

2016 6

201



1 2016

2	1	2
	3	4
	5	6
	7	

8	9
---	---

3	1
2	3
	4

4	2016
---	------

1  
2

3	+	+	+
4	68		

5

6

+

+

“

”

1

“

”

2

“ ”

3 “  
”  
1000 2020 12 31  
20000  
2000  
4 2021 12  
31 100  
A  
10

1 114  
136 2016  
CEO  
800  
10  
2

2016 1 1

3

4

2016 1 1

1

206

2000 90  
10  
2  
2000  
2000 +1000  
3 117  
1 500  
10  
2 90  
1  
2  
207

100 30  
20  
10 5  
3 1  
4  
2016

1

2016 1 1

12 9  
24 18  
2

208

3

8000

4

1

2015

200

2

2016

A

800

B

600

C

400

3

209



2016

300

4

5

“

”

6

7

“

”

210



**2016**

O

1

1

2

3

4

5

6

7

8

9

212

10  
11  
12  
13  
14  
15  
2

1  
1  
2  
3  
4  
5  
6  
7  
8

2  
1  
2  
3

4  
5  
6  
7  
8

1  
2  
3  
4  
5  
6  
7  
8  
9  
10  
11  
12  
13  
14

15  
16  
17  
18  
19  
20  
21  
22  
23  
24  
25  
26  
27  
28  
29  
30  
31

1  
1

2

2

1

2

3

4

5

6

7

8

9

1

1

2016

2

BC

2016

3

4

5

2

1

2

B

3

C



4

5

1

2016

2016

2

1

2

3

4

218

5

6

7

8

9

10

11

12

13

3

1

2

3

1

2

15

3

1000

4

1

2016

“

”

2

2016

3

2016

4

2016

222